

15 Years of Regulating Nursing Homes



Key Findings:

- 1** The lived experiences of residents improved in the last 15 years in nursing homes that have good regulatory compliance and strong governance and management.
- 2** A rights-based culture is now more evident in nursing homes.
- 3** Nursing homes are growing in size and catering for larger numbers while smaller nursing homes are more likely to close.



Changing landscape between 2009 and 2024:

Regulation has helped to drive changes in the nursing home sector, including:



Movement away from medical models of care towards a social model of care grounded in a human rights-based approach.



Improvements to premises in many nursing homes with more personal space, privacy and dignity for residents.



Promotion of the voice of residents as part of the inspection process.



More residents experiencing person-centred care and exercising greater choice and preference.

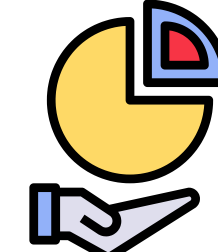
Spotlight on trends between 2013 and 2023:



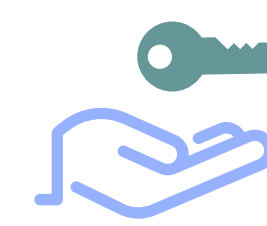
↑ **12%** increase in nursing home beds.



↓ **2.3%** decrease overall in the number of nursing homes.



8.3 more beds on average per nursing home.



↑ **7%** in private ownership.
 ↓ **5%** in HSE ownership. ↓ **2%** in voluntary sector ownership.

2023 in numbers:

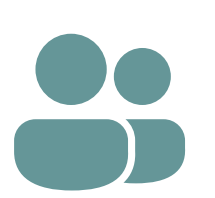
553 nursing homes



32,214 beds



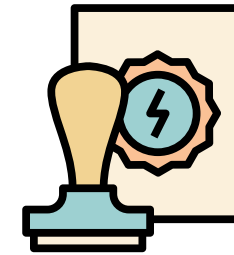
31,000 living in nursing homes



360 registered providers



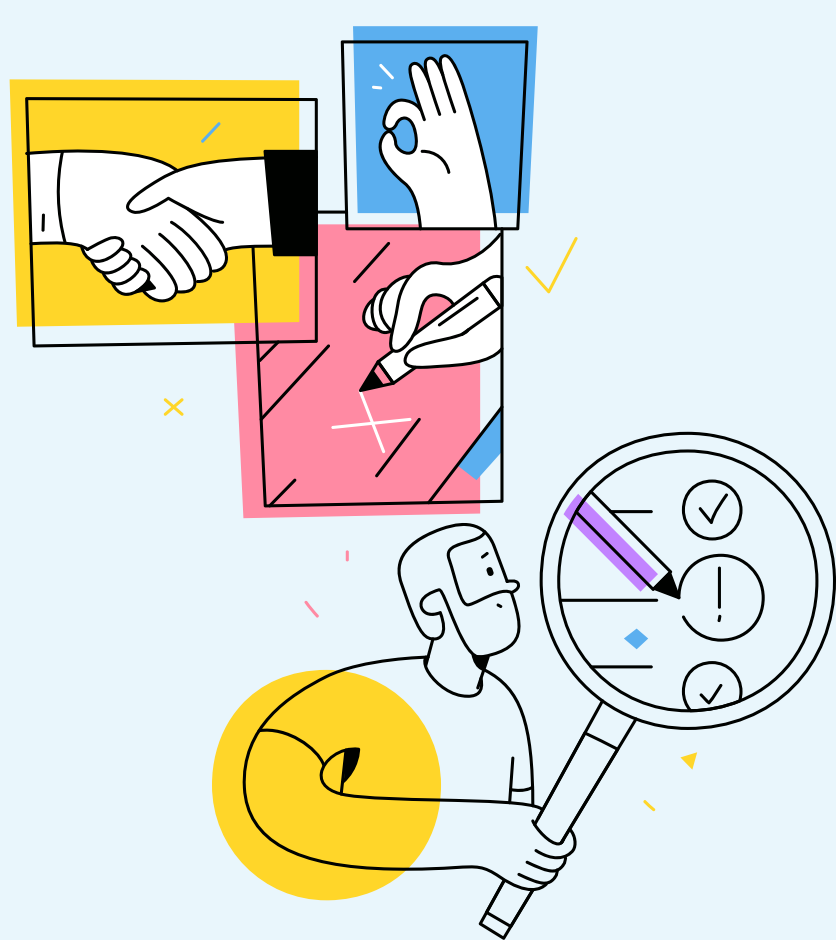
10 new nursing homes registered



3 cancellations of registrations



Looking forward we will:



- 1** Continue to drive improvements for nursing home residents, prioritise their rights and quality of life.
- 2** Collaborate with stakeholders to shape future care models.
- 3** Support the enhancement of the regulatory framework.