

# 10

## Years of monitoring and regulating children's services



### Key numbers 2013-2024:

A green circular icon containing a white calendar icon with the text "10 YEAR" written on it.

Referrals to Tusla increased from **43,630** to **91,924**

Children in care decreased from **6,643** to **5,615**

HIQA conducted over **629** inspections

HIQA interacted with over **2,500** children and young people

### Over 10 years

### HIQA found



Tusla has provided a safe service to most children at immediate and ongoing risk, despite challenges

There is an improved focus on children's rights, including the provision of information on rights

Significant improvements in the quality of initial assessments of children's needs

More child-centred practice, like enabling children to decorate their bedrooms in residential care

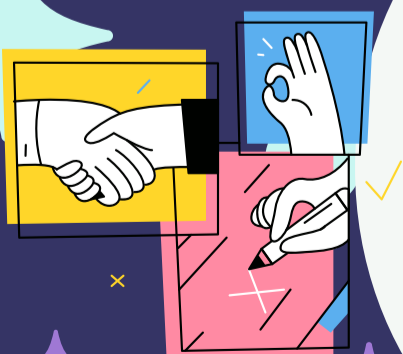


Vacant social work jobs are impacting service provision for some children

There is a lack of both residential and suitable foster care placements

Substantial numbers of children are without an allocated social worker or have had multiple changes in worker

### Going Forward:



This year HIQA conducted a risk-based provider programme of child protection and foster care services where 25% or more children lacked an allocated social worker



HIQA will continue to advocate for children and young people to improve services including through the implementation of new national standards and regulations