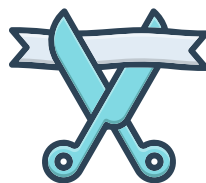


Key milestones

Regulating and monitoring children's social care services



May 2007



HIQA established

HIQA inspects HSE children's services.



2007 - 2013

2014



1 January
The Child and Family Agency (Tusla) established. HIQA starts inspecting Tusla services

HIQA inspects child protection and welfare services provided to children living in direct provision

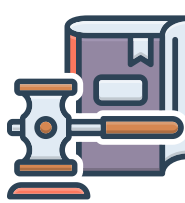
Children First Act 2015 signed into law

National Standards for Special Care Units published



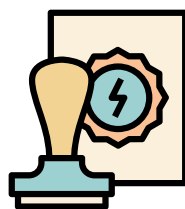
2015

2017



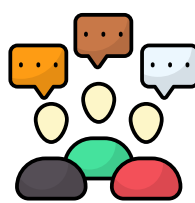
HIQA commences statutory investigation into Tusla's management of referrals of child sexual abuse including retrospective abuse

Three-phase inspection programme of foster care services across all 17 Tusla service areas



2017 - 2022

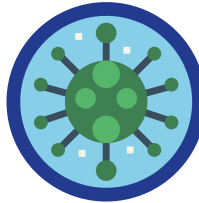
2018



1 January
Regulation of special care units begins

National Standards for Children's Residential Centres published

HIQA organises an art competition for children with the theme 'kindness during the COVID-19 pandemic'



2020

2022



Overarching National Standards for the Care and Support of Children using Health and Social Care Services submitted to Minister

2023

2024



19 children take part in HIQA Children's and Young People's Poster Competition